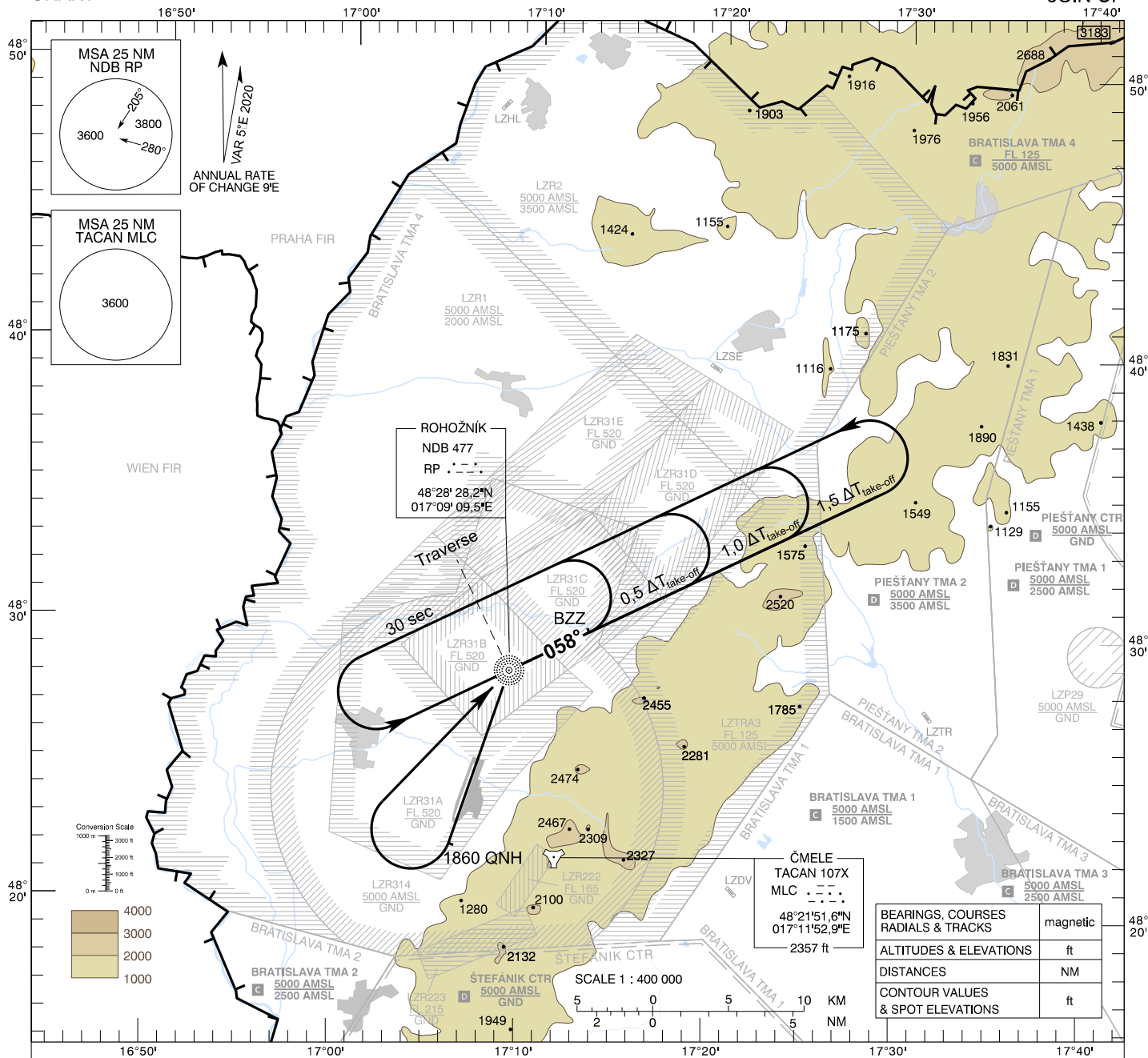


OAT SPECIAL PROCEDURES CHART

TRANSITION ALTITUDE
10 000 ft
AD ELEV 689 - 25 hPa

MALACKY RADAR 120,750 (259,625)
MALACKY TOWER 129,575 (120,750)

MALACKY (LZMC) FORMATION JOIN-UP



$\Delta T_{\text{take-off}}$	interval of take-off
BZZ	start point of formation join-up, at the distance S_h , when climbing to join-up height H_z

PROFILE VIEW N/A

BEARINGS, COURSES RADIALS & TRACKS	magnetic
ALTITUDES & ELEVATIONS	ft
DISTANCES	NM
CONTOUR VALUES & SPOT ELEVATIONS	ft

CHANGES: order of the chart updated